

## WORLD POPULATIONS

All over the world there are many communities. They are alike because they are where people live, work, and have fun. They are different in many ways, especially in population. We classify communities as urban, suburban, and rural to better understand their needs.

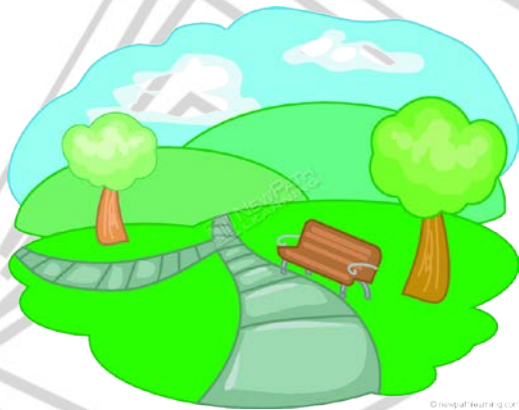
**Urban** communities are in cities with large populations. There are many thousands or millions of people in urban communities. There are many large stores, banks, parks, office buildings, museums, theatres, and restaurants. Skyscrapers are built in urban areas. People get around in public transportation such as buses, trains, subways, taxi cabs, and personal cars. Urban areas are usually crowded and noisy. There is usually more crime and pollution in urban areas. Some urban communities are Tokyo, New York City, Chicago, Los Angeles.



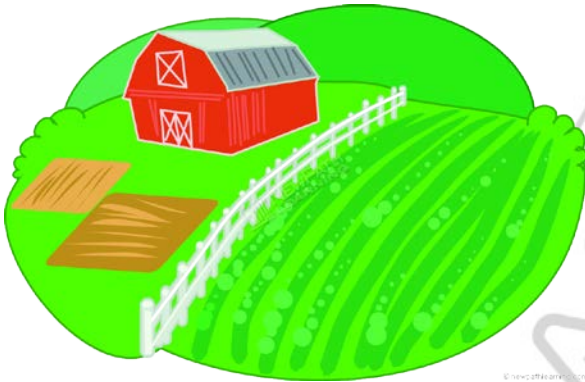
Please login or register to download the printable version of this study guide.

[www.newpathlearning.com](http://www.newpathlearning.com)

**Suburban** communities are located near cities. Some suburbs are built out of the cities to be safe and comfortable. Some suburbs were built as planned communities. The planners built homes, schools, parks and stores to attract people to the new community. Highways and rail lines were built from cities to help suburbs grow. Many people commute into the city for work.



**Rural** communities are small towns and villages in the open countryside. These communities are small with only hundreds or a few thousand people living in them. They are usually surrounded by farmland and fields. Many people work in the farming industry. Stores, schools, offices are small. With a small population, everyone seems to know each other. In times of trouble, the whole town may work together to help each other.



All commu  
better jobs  
population

In 1650, th

Please login or register to download the  
printable version of this study guide.

[www.newpathlearning.com](http://www.newpathlearning.com)

In 2000, it was 6 billion  
In 2011, it was 7 billion

The population of the world is estimated to be 9 billion in 2050.

**Census** - official count of people living in a city, state, or country

**Demography** - study of human population statistics

**Population density** - number of people per square mile

**Here are the 10 most populated cities on Earth as of 2010**

(with approximate numbers from [www.geohive.com](http://www.geohive.com))

1	Tokyo	36,668,510
2	Delhi	22,156,810
3	São Paulo	20,262,493
4	Mumbai	20,040,868
5	Cuidad de México	19,460,212
6	New York	19,425,069
7	Shanghai	16,575,110
8	Kolkata	15,552,080
9	Dhaka	14,648,354
10	Karachi	13,124,793

Here are the **approximate populations of some countries**, as of April, 2012, in the world and countries



Please login or register to download the printable version of this study guide.

[www.newpathlearning.com](http://www.newpathlearning.com)

China  
India  
United States  
Canada  
Brazil  
Pakistan  
Australia  
Russia  
Japan  
Mexico

179,000,000  
23,000,000  
145,000,000  
126,000,000  
116,000,000

### Try this!

What is the population of the community in which you live?

Is your community rural, urban, or suburban?

What is the most populated city in the United States?