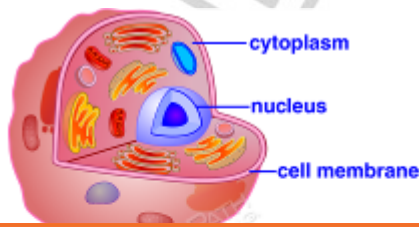


CELLS

Cells- the Building Blocks of Living Things

Cells are the building blocks of life. All living things are made of cells. A **unicellular organism** is made up of only one cell while **multicellular organisms** are made up of many cells.

Animal and plant cells have similar and different parts. Both cells include a **nucleus** and a **cell membrane**.



Please login or register to download the printable version of this study guide.

www.newpathlearning.com

Each of the **cell** parts have different jobs and functions to do in order to keep the cell healthy and working properly.

Lesson Checkpoint:

Why are cells referred to as the building blocks of life?

The **nucleus** is the control center of the cell. The nucleus holds all the instructions for cell's activities. It is the nucleus' job to make sure all the cell parts do their jobs in order to keep the cell working properly.

Another important part of a cell is the **cell membrane**. The cell membrane separates the cell from everything outside the cell. It guards everything that comes in and out of the cell, which protects the cell.

Lesson Checkpoint:

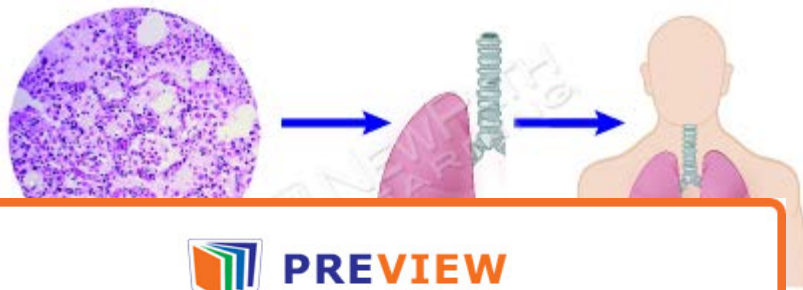
What is the job of the nucleus of the cell?

Every cell is filled with a gel-like liquid called **cytoplasm**. The main job of the cytoplasm in a cell is to hold all cell parts in one place.

Each cell in an organism has its own job to do in order to keep the cell working properly.

Cells make up all the different parts of the human body. A group of one kind of cell is a **tissue**, which means a tissue contains MORE than one cell.

A group of tissues that work together is an **organ**. Lungs are an example of organs in the human body.



Please login or register to download the printable version of this study guide.

www.newpathlearning.com

Groups of
such as the

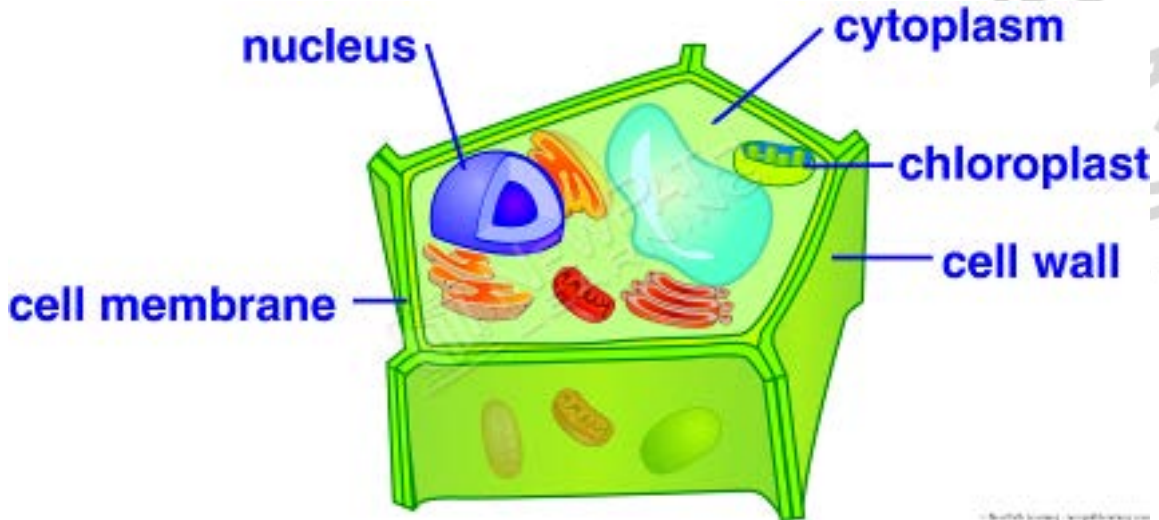
man body,

Lesson Checkpoint:

What do we call a group of tissues working together in a human body?

Differences Between Plant and Animal Cells

Plants and animals have similar and DIFFERENT parts. **Chloroplast** is a part of a plant cell but not an animal cell. Chloroplast catches the sun's energy for the plant because plants need the sun's energy to make their own food. Animal cells do not have chloroplasts because they do not make their own food.



Plant cells also have a **cell wall**, which an animal cell does not have. The main job of a plant's cell wall is to support and protect the cell. It is located outside the plant cell's cell membrane.

Lesson

Plant cell



Please login or register to download the printable version of this study guide.

www.newpathlearning.com

A microor
eyes alone
microscop

ch our
through a