

MAIN PARTS OF PLANTS

Parts of Plants

A plant has many important parts, such as its **roots, stem, leaves, and flower.**



Roots

Each part of a plant to live.

- Roots help a plant to anchor itself in the ground.
- Roots help a plant to take in water and nutrients from the soil, which a plant needs to live and grow.
- Roots of a plant store extra food for the plant too.

Please login or register to download the printable version of this study guide.

www.newpathlearning.com

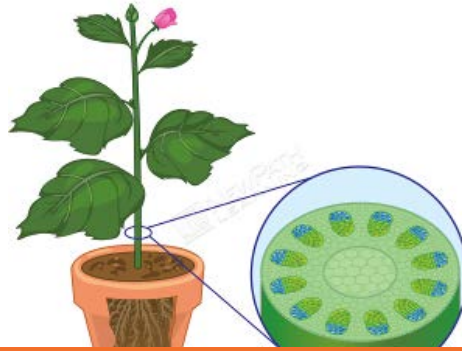


Lesson Checkpoint:
What is one job of the ROOTS of a plant?

Stem

Let's now look at a plant's stem.

- A plant's **stem** is used to support the plant. The stem allows the plant's leaves to reach above the soil so that they may take in the sunshine.
- A plant needs sunshine to grow, make food, and live. A plant's stem carries the water and nutrients that is taken in by the plant's roots to the rest of the plant.



Please login or register to download the printable version of this study guide.

www.newpathlearning.com

Leaves

Time to in
important

- One job is to take in sunshine, which the plant needs to make food and to live. Leaves have small openings in them that allow air and water to enter in and out of the plant.
- Leaves contain **chlorophyll**, which is the green substance that gives the plant its green color and that helps the plant make its own food.



Lesson Checkpoint:
What is one job of the LEAVES of a plant?

Photosynthesis

Plant leaves are the part of a green plant where the plant's own food is made. The plant makes food through a process called **photosynthesis**. In photosynthesis, a green plant uses energy from the sun, water it gets from the soil, and the air to make its food.

During the process of photosynthesis, the leaves of a green plant take in **carbon dioxide**, which is what the plant needs to make its own food. Humans and other animals breathe out carbon dioxide, which a plant then takes in through its leaves. **Photosynthesis** creates food for the plant and at the same time releases **oxygen** into the air.

Lesson Checkpoint:

What do plants take in during photosynthesis?

Flower

Now it is time for the most beautiful part of the plant, the flower! The main job of a flower is to produce seeds. Plants grow from seeds.

Parts of a Flower

There are several parts of a flower which consist of the stigma.

Please login or register to download the printable version of this study guide.

www.newpathlearning.com

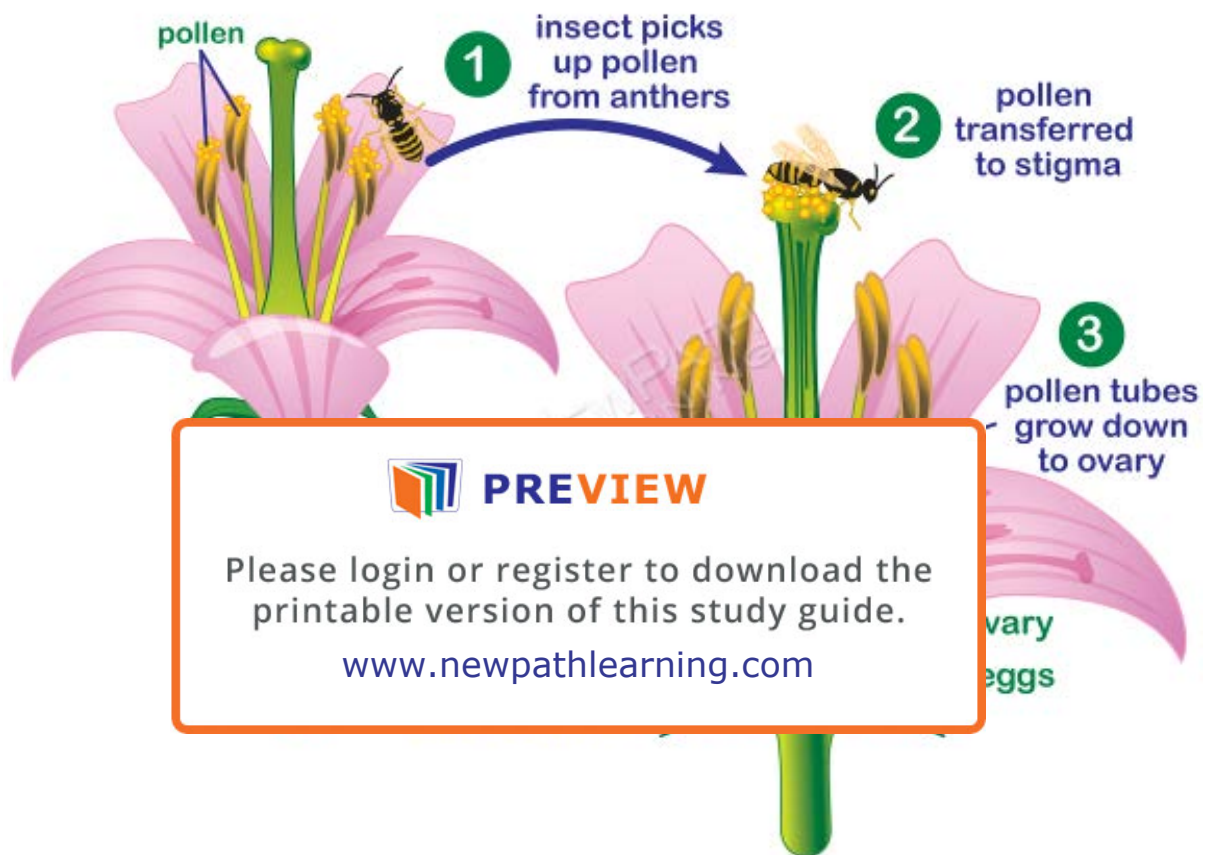
Sepals look like small leaves surrounding the bud of a flower. They protect a developing flower before it blooms.

The **petals** of a flower, which are often colorful and scented, attract insects to the flower.



The **stamen** of a flower is made up of two main parts: the **anther** and the **filament**.

The **filament** is the extremely thin structure that holds up the anther.

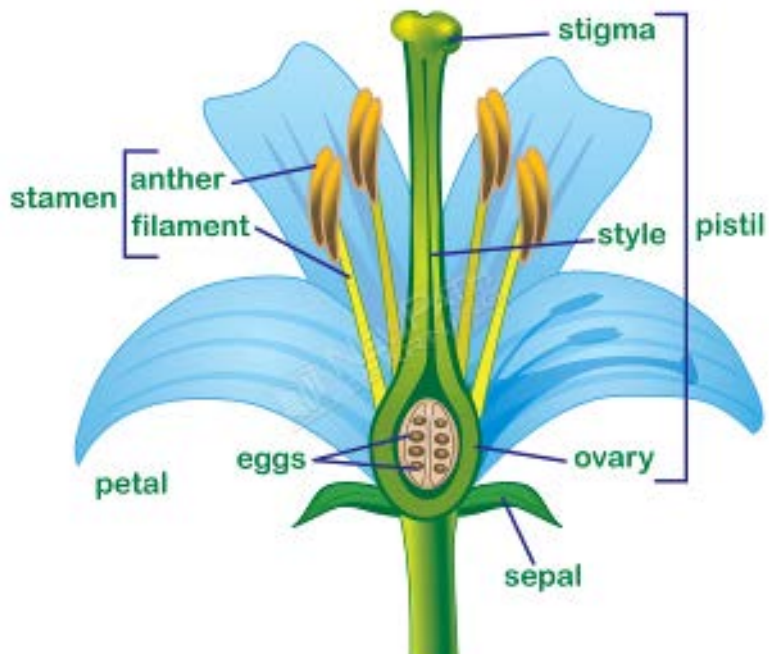


 **PREVIEW**

Please login or register to download the printable version of this study guide.

www.newpathlearning.com

The **anther** contains pollen that collects on bees and butterflies that land on the flower that then transfer the pollen to other flowers, which is a necessary part of plant reproduction. Pollen is the fine yellow, powder like substance found on the anthers of a flower. Pollen is needed in order for flowers to reproduce.

 **PREVIEW**

The **pistil**
style, and

Please login or register to download the
printable version of this study guide.

igma,

The **stigm**
collected o

www.newpathlearning.com

en is

The **style** is the tube-like structure that holds up the stigma on a flower.

The **ovary** of a flower contains seeds and turns into fruit.

Lesson Checkpoint:
Which part of the flower contains the pollen?