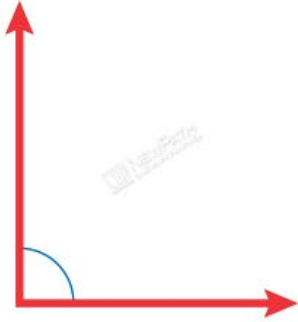


ANGLES

Types of Angles:

A **right angle** is an angle that measures 90° .



A **straight angle** is an angle that measures 180° .



 **PREVIEW**
Please login or register to download the printable version of this study guide.
www.newpathlearning.com

An **obtuse**

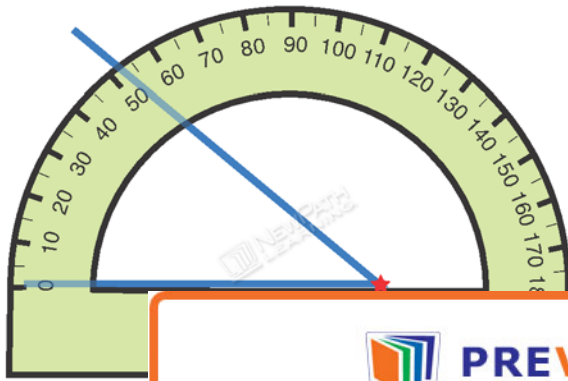


An **acute angle** is an angle that measures LESS than 90° .



MEASURING angles using a protractor:

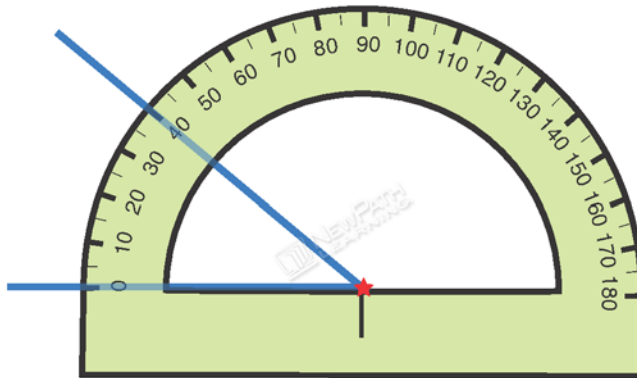
1. Look at the straight edge of protractor: locate the hole that is in the CENTER of that edge.
2. Locate the point (vertex) of the angle you are measuring. Line up that point (vertex) inside the hole of the protractor.



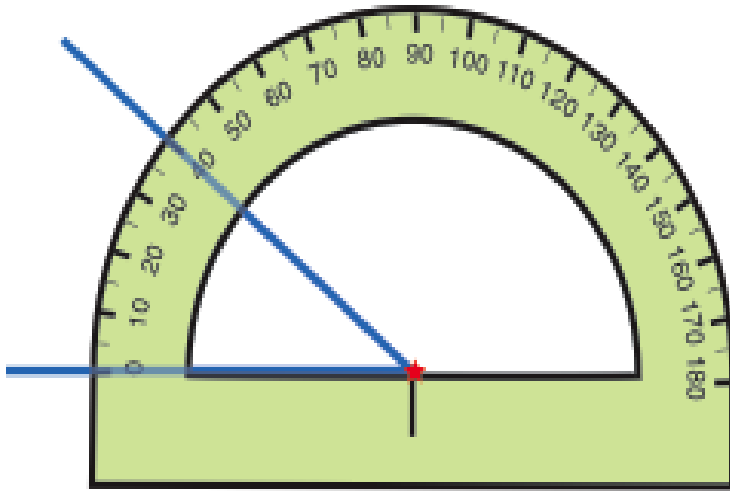
3. Next one

 **PREVIEW**

Please login or register to download the printable version of this study guide. www.newpathlearning.com



4. Then, find the point where the second side of the angle crosses over the curved part of protractor.



5. Finally, look at the number located where the angle line crosses over the curved part of the protractor to determine the measure of the angle.

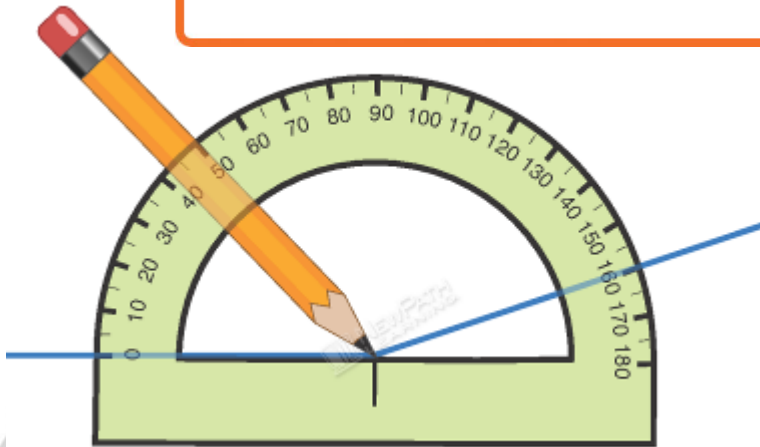
Let's measure



PREVIEW

Please login or register to download the printable version of this study guide.

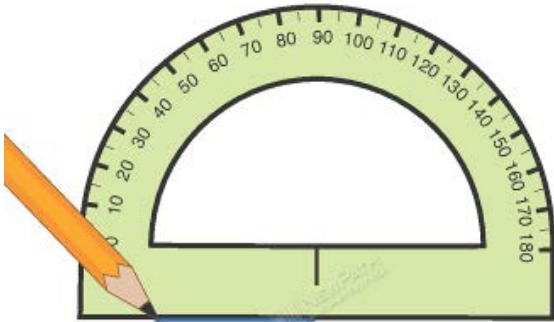
www.newpathlearning.com



This **obtuse angle** measures **160°**.

DRAWING angles using a protractor:

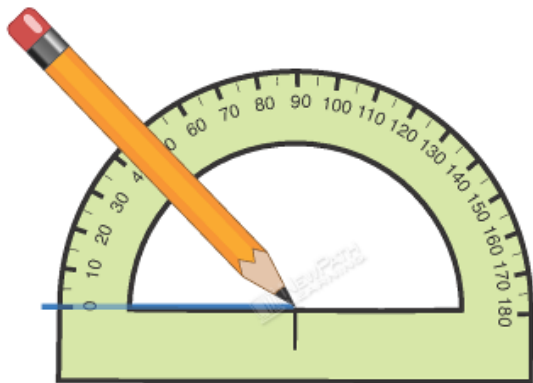
1. Place the protractor on a piece of paper. Using the straight edge of the protractor, draw a straight line, this will be one side of your angle.



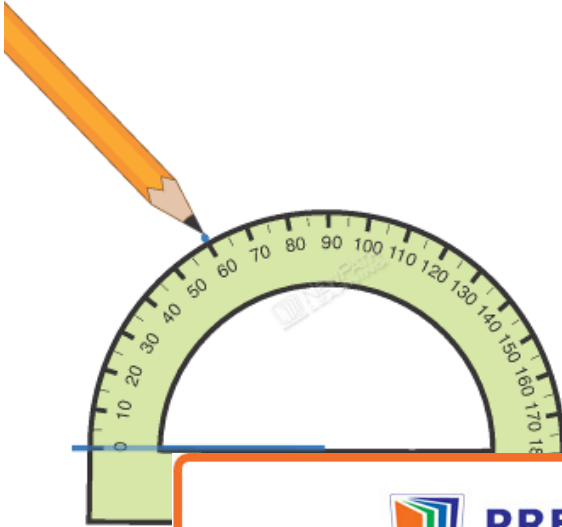
2. Find the hole in the center of the straight edge of the protractor. Find the end point (vertex) of the straight line you just drew and line it up in the middle of that hole.



3. Line up the 0 on the straight edge of the protractor with the line you drew.



- Find the desired measurement (degree) you would like your angle to be on the curved edge of the protractor and make a MARK above that measurement. *Example:* if you want your angle to measure 60° , place a mark above the 60° on the curved edge of the protractor.



- Final end now

 **PREVIEW**

Please login or register to download the printable version of this study guide.

www.newpathlearning.com

ect the
You have

