

ELAPSED TIME

Exploring Elapsed Time

Elapsed time is the amount of time that has passed between two defined times:

Elapsed time from 2:00 → 3:00 is 1 hour.

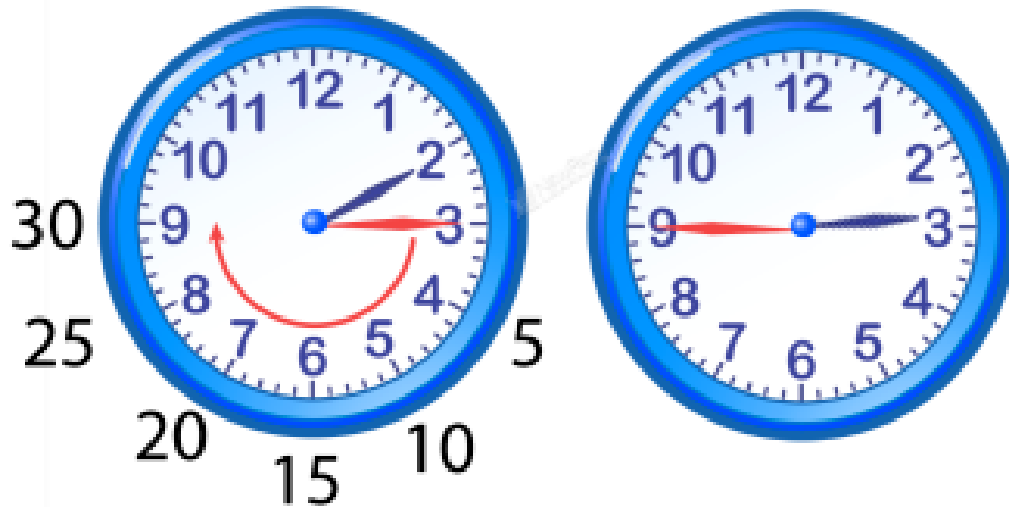


Elap



Please login or register to download the printable version of this study guide.

www.newpathlearning.com




Example:

If a movie started at 2:10 and ended at 4:45, how long was the movie?

Time movie **started: 2:10**

Time movie **ended: 4:45**



 **PREVIEW**

Please login or register to download the printable version of this study guide.

www.newpathlearning.com

Let's figure

From **2:10** → **4:10**, 2 HOURS elapsed.

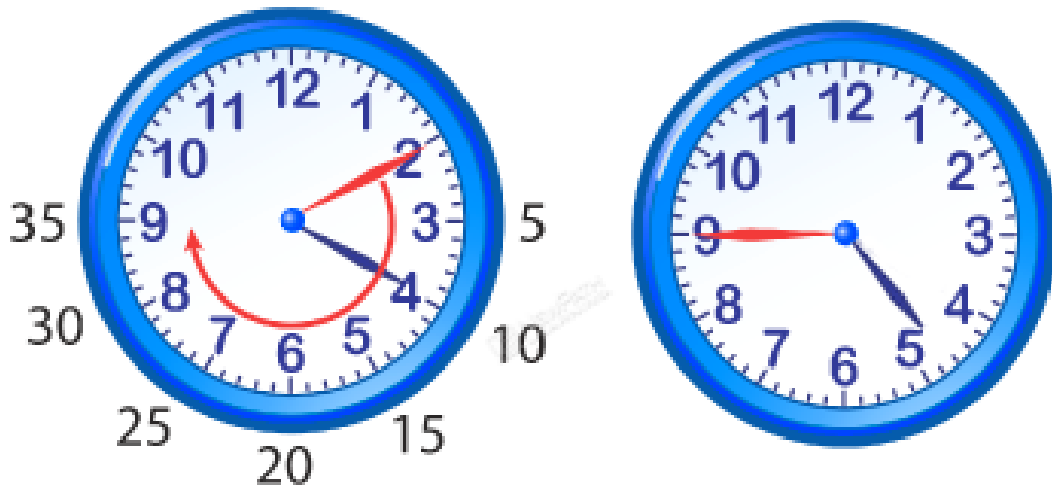


1 hour

2 hours

Now let's figure out how many **MINUTES** elapsed?

From **4:10** → **4:45**, **35 MINUTES** elapsed.



The movie



Please login or register to download the printable version of this study guide.

www.newpathlearning.com